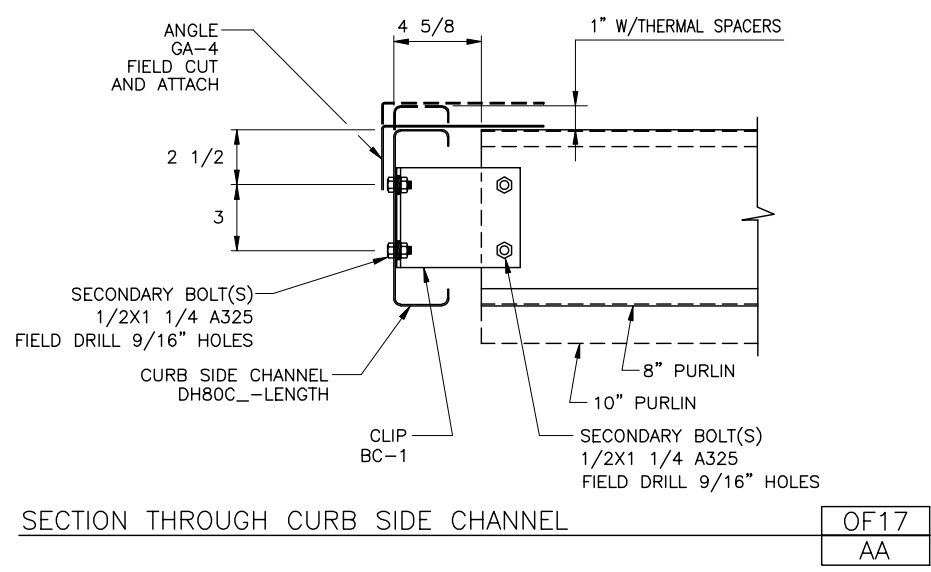


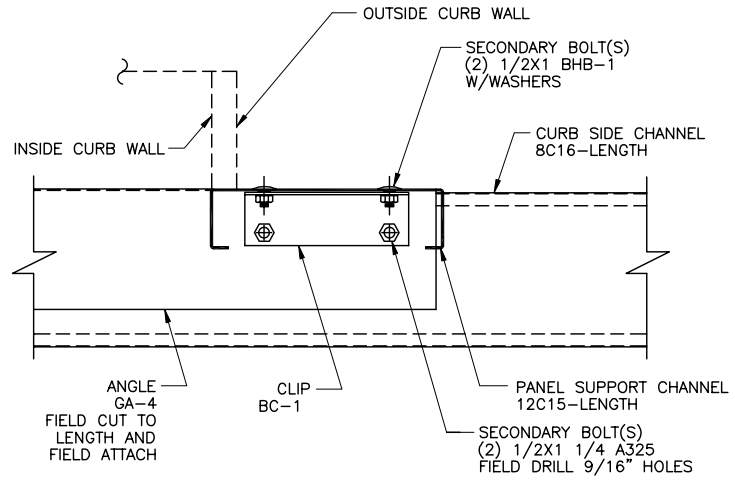
DESIGN NOTE:
LOAD CAPACITY OF STANDARD FRAMING AS SHOWN IS 3000 LBS.

SAFETY PRECAUTION
DO NOT WALK OR STAND ON
CURB FRAMING UNTIL PANELS
ARE SECURED PROPERLY.

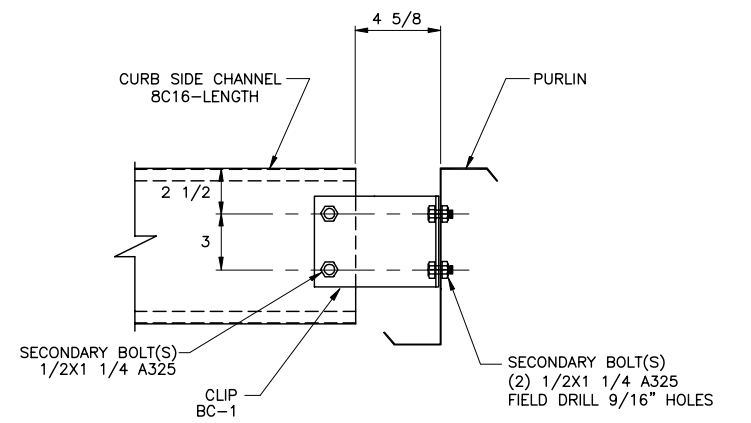
ROOF CURB FRAMING KEY OFOD AA



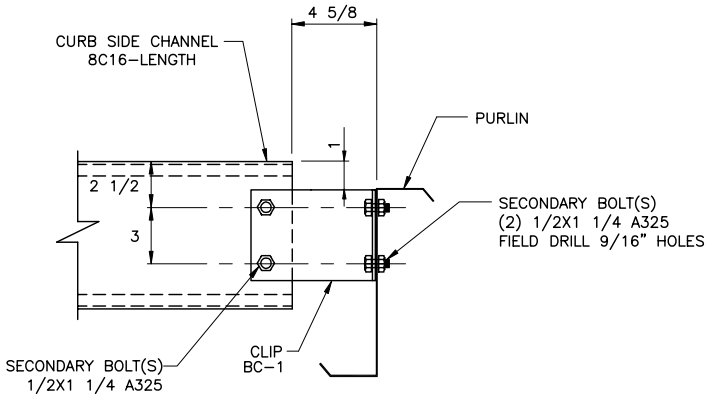
SECTION THROUGH CURB SIDE CHANNEL OF17 AA



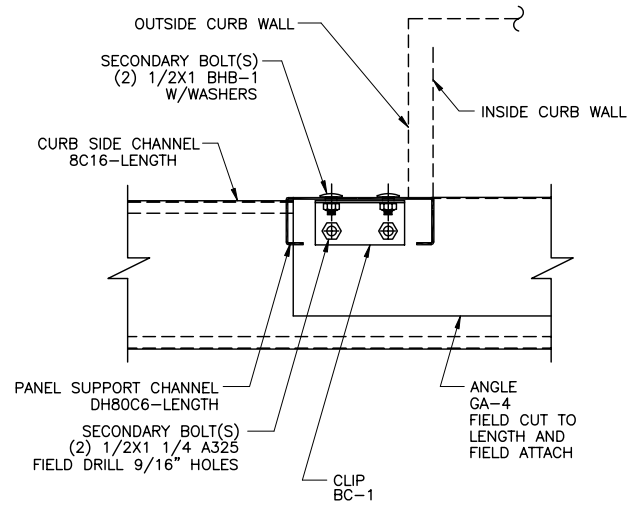
SECTION THROUGH UPPER PANEL SUPPORT CHANNEL OF22 AA



SECTION THROUGH PURLIN AT CURB SIDE CHANNEL CONNECTION WITHOUT THERMAL SPACERS OF02 AA



SECTION THROUGH PURLIN AT CURB SIDE CHANNEL CONNECTION WITH THERMAL SPACERS OF02C AA



SECTION THROUGH LOWER PANEL SUPPORT CHANNEL OF27 AA

ROOF CURB

FRAMING DETAIL

ARCHITECTURAL INTEGRATED METALS, INC.
1724 Northside Industrial Boulevard
Columbus, Georgia 31904
(706) 660-1877 FAX. (706) 660-1474
WWW.AI-METALS.COM



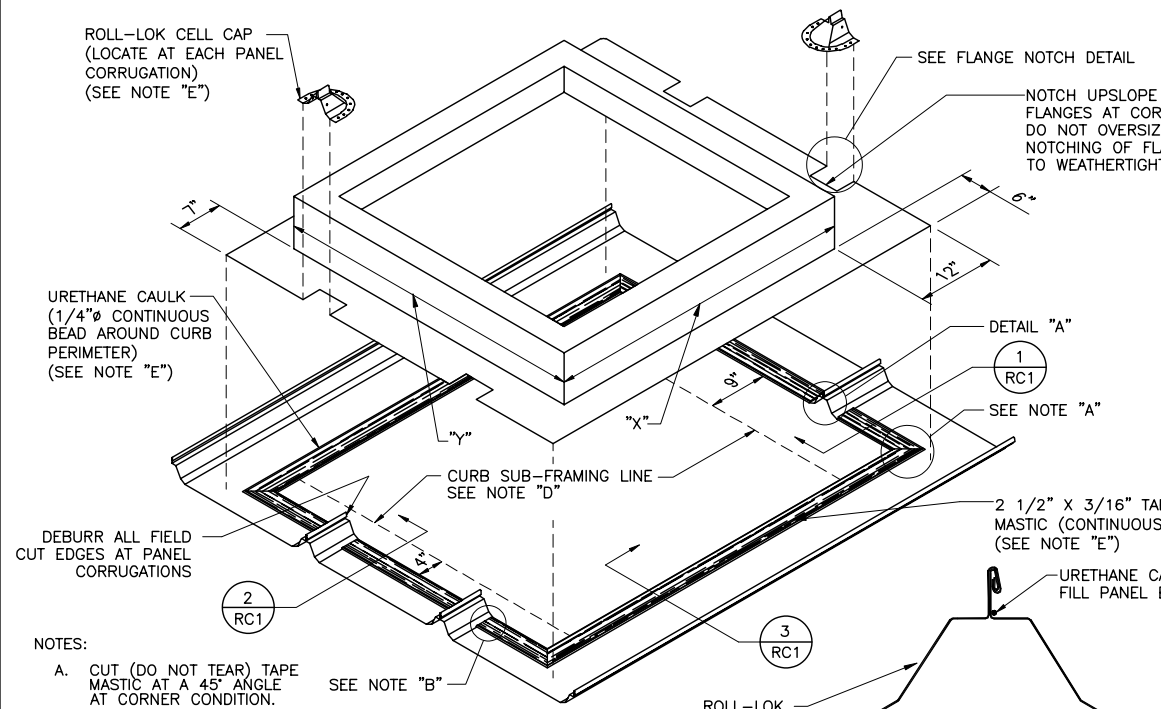
DRAWN BY:	REVISED BY:
CHECKED BY:	REVISION NO.:
DWG. DATE:	REVISION DATE:

NO SCALE

JOB NUMBER

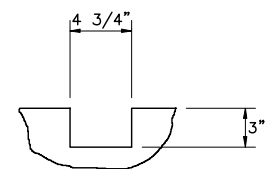
DWG. NO.

RC-2



- NOTES:
- CUT (DO NOT TEAR) TAPE MASTIC AT A 45° ANGLE AT CORNER CONDITION.
 - CUT (DO NOT TEAR) TAPE MASTIC AT PANEL CORRUGATIONS.
 - DO NOT USE STANDING SEAM CAULK (SSCK-1) IN LIEU OF URETHANE CAULK.
 - ROOF CURB SUB-FRAMING AND INSULATION OMITTED FOR CLARITY.
 - ALL CAULK, MASTIC, CELL CAPS AND FASTENERS ARE PRE-PACKAGED WITH THE ROOF CURBS.
 - AIR CONDITIONER DRAINS SHOULD BE FABRICATED FROM PLASTIC PIPE OF SUITABLE DIAMETER AND EXTENDED AT LEAST TO THE RAIN GUTTER, AND PREFERABLY WELL PAST THE GUTTER. DRAIN WATER FROM AIR CONDITIONER CONTAINS DISSOLVED COPPER FROM THE CONDENSATION COILS THAT CAN CAUSE RUSTING OF ALUMINUM COATED SHEET PANELS IN A VERY SHORT TIME.
 - WHEN FIELD CUTTING PANELS OR TRIM DO NOT USE ABRASIVE SAWS OR OTHER CUTTING METHODS WHICH PRODUCE HOT METAL PARTICLES OR BURN THE CUT EDGES. THESE METHODS WILL DAMAGE THE PAINTED AND ALUMINUM COATED FINISH AND VOID ANY WARRANTIES. USE DOUBLE CUT SHEARS, NIBBLERS OR OTHER CUTTING DEVICES WHICH DO NOT PRODUCE HOT METAL PARTICLES OR BURNED EDGES.

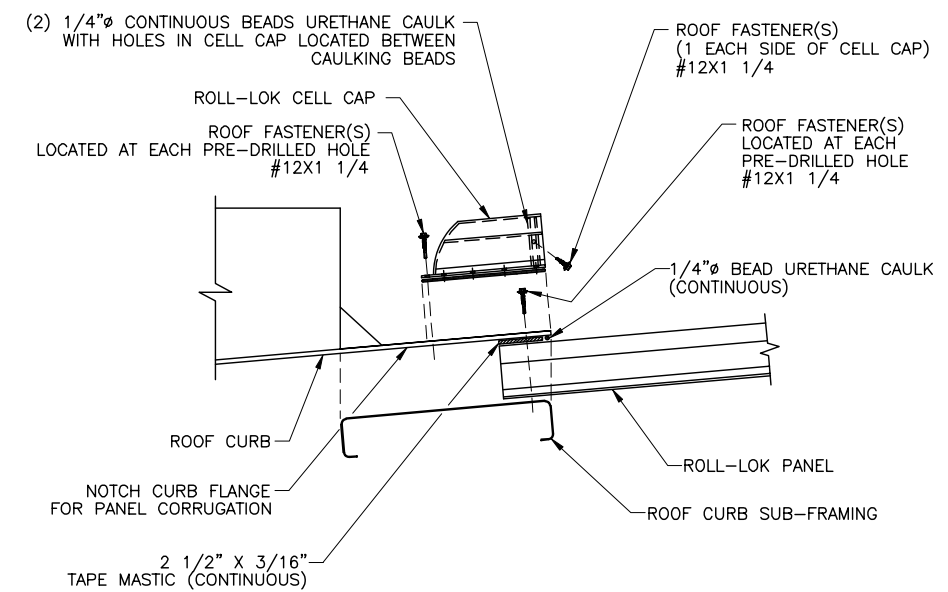
SAFETY PRECAUTION
 WORKERS SHOULD MAINTAIN A CONSTANT AWARENESS OF THEIR LOCATION IN RELATION TO THE ROOF EDGE AND ANY ROOF OPENINGS AT ALL TIMES.



FLANGE NOTCH DETAIL (TYPICAL)

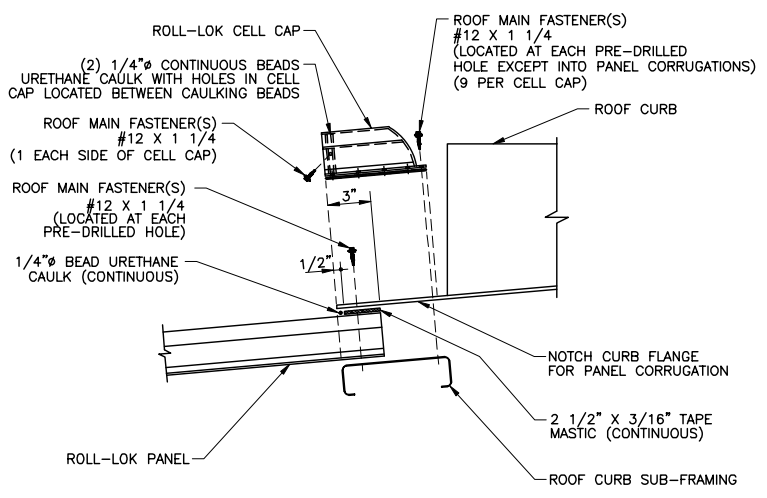
INSTALLATION PROCEDURES

- INSTALL ROOF CURB SUB-FRAMING AT THE DESIRED LOCATION.
- THE ROLL-LOK ROOF IS TO BE INSTALLED AND SEAMED PRIOR TO THE ROOF CURB INSTALLATION.
- CUT THE OPENING FOR THE CURB IN THE ROOF PANELS. ROOF OPENING SIZE SHALL BE ("X"+13) BY "Y".
- MARK THE PANEL CORRUGATION LOCATIONS ON THE UPSLOPE AND DOWNSLOPE CURB FLANGES AND NOTCH AS SHOWN ABOVE. (DO NOT OVERSIZE NOTCH.)
- "DRY FIT" THE CURB OVER THE OPENING AND MARK THE OUTER FLANGE LINE WITH A PENCIL. REMOVE CURB.
- APPLY THE TAPE MASTIC AND URETHANE CAULK AS OUTLINED IN THE DETAILS.
- PLACE THE CURB OVER THE OPENING AND ATTACH WITH #12X1 1/4 ROOF FASTENERS IN THE PRE-DRILLED FLANGE HOLES. DO NOT INSTALL FASTENERS WITHIN 1 1/2" OF PANEL CORRUGATIONS.
- CAULK THE PANEL SEAMS AS SHOWN IN DETAIL "A".
- CAULK THE FLANGE AND INSIDE FACES OF THE ROLL-LOK CELL CAP WITH (2) 1/4" BEADS OF URETHANE CAULK. PLACE THE CELL CAPS OVER PANEL ENDS AND ATTACH WITH THE ROOF FASTENERS AS SHOWN IN THE DETAILS.
- TOOL ALL EXPOSED CAULKING TO ALLOW FOR PROPER DRAINAGE. REMOVE ALL METAL SHAVINGS FROM CURB AREA.

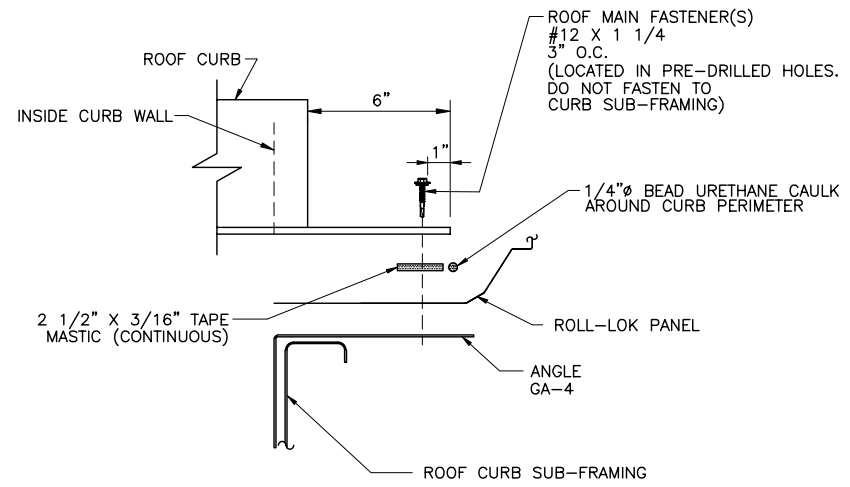


DETAIL AT UPSLOPE CURB FLANGE
 ROLL-LOK ROOF

ROOF CURB INSTALLATION DETAIL
 ROLL-LOK ROOF



DETAIL AT DOWNSLOPE CURB FLANGE
 ROLL-LOK ROOF



ROOF CURB INSTALLATION DETAIL @ SIDES
 ROLL-LOK ROOF

ROOF CURB DETAIL

ROLL-LOK PANEL

ARCHITECTURAL INTEGRATED METALS, INC.
 1724 Northside Industrial Boulevard
 Columbus, Georgia 31904
 (706) 660-1877 FAX. (706) 660-1474
 WWW.AI-METALS.COM



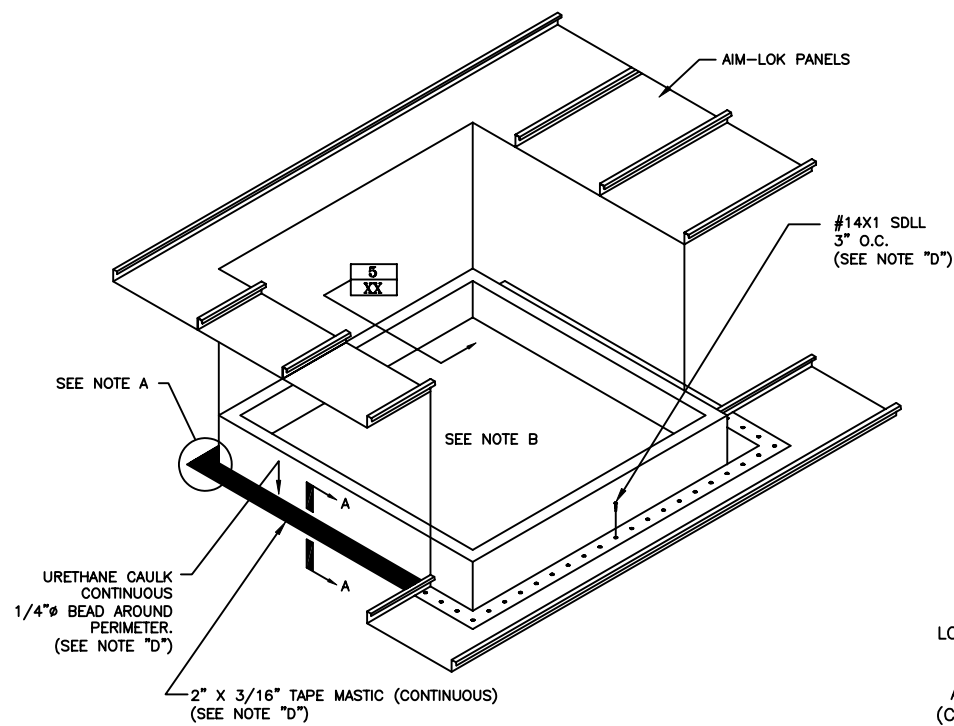
REVISION NO.:	0
REVISION DATE:	00/00/00
DWG. DATE:	08/21/08
DRAWN BY:	EC
CHECKED BY:	

NO SCALE

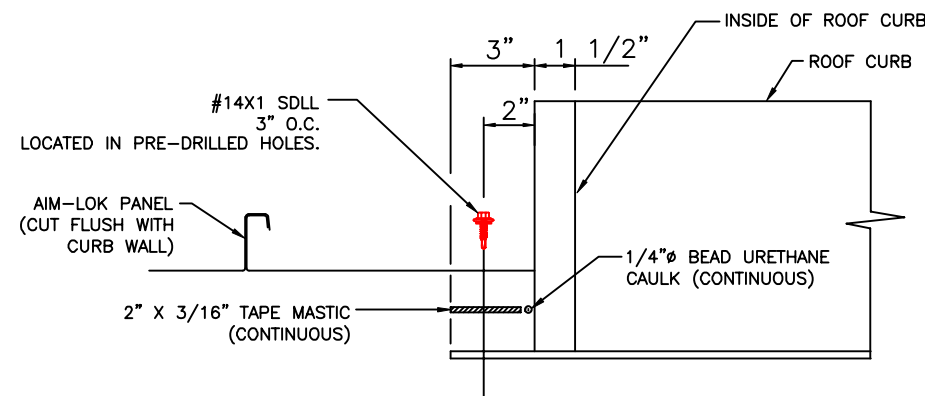
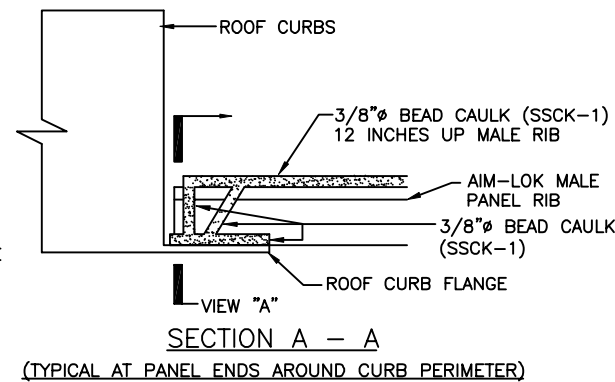
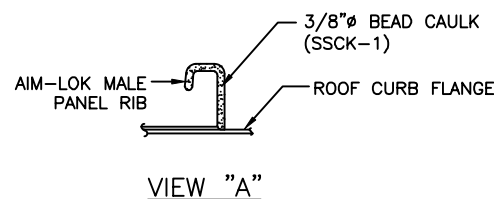
JOB NUMBER

DWG. NO.

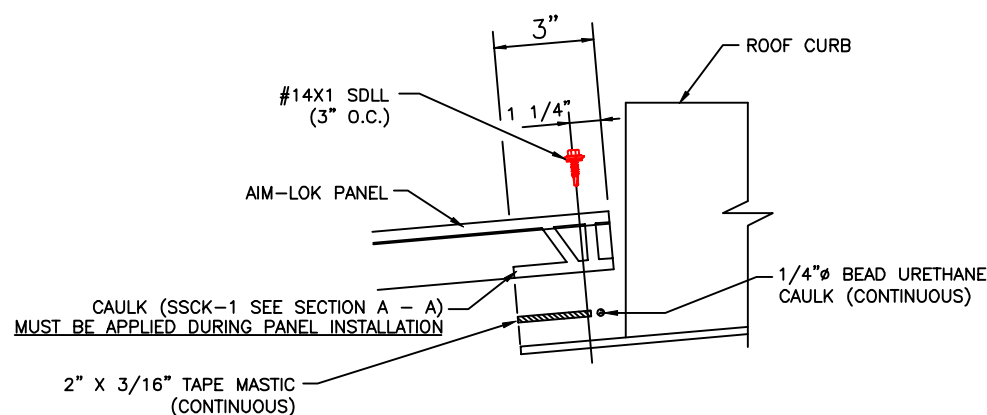
RC-1



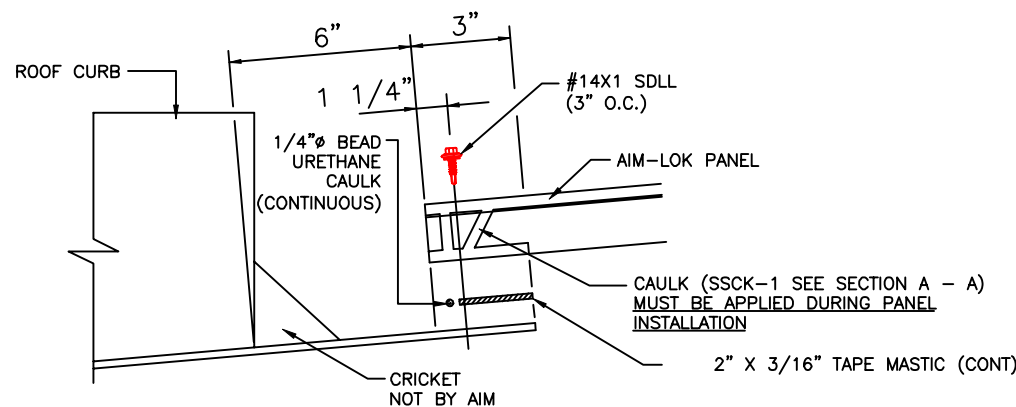
ROOF CURB INSTALLATION DETAIL
AIM-LOK ROOF



ROOF CURB DETAIL AT SIDES
AIM-LOK PANELS



DETAIL AT DOWNSLOPE CURB FLANGE
AIM-LOK PANELS



DETAIL AT UPSLOPE CURB FLANGE
AIM-LOK PANELS

INSTALLATION PROCEDURES

1. INSTALL THE CURB SUB-FRAMING AND ROOF CURB PRIOR TO SHEETING THE ROOF.
2. CUT THE ROOF PANELS AT THE CURB FLANGES AS SHOWN.
3. APPLY THE TAPE MASTIC AND URETHANE CAULK TO THE CURB FLANGES AS SHOWN IN THE DETAILS. SEALANT PLACEMENT IS CRITICAL.
4. PLACE PANEL ON THE CURB FLANGE AND ATTACH WITH ROOF FASTENERS. CAULK PANEL ENDS WITH SSCK-1 CAULK BEFORE INSTALLING THE NEXT PANEL. (SEE SECTION A - A)
5. CONTINUE INSTALLING PANELS IN THIS MANNER UNTIL ALL PANELS ARE IN PLACE AND CURB INSTALLATION IS COMPLETE.
6. TOOL ALL EXPOSED CAULKING TO ALLOW FOR PROPER DRAINAGE. REMOVE ALL METAL SHAVINGS FROM CURB AREA.

NOTES:

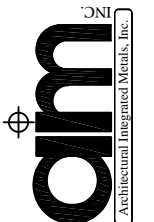
- A. CUT (DO NOT TEAR) TAPE MASTIC AT A 45° ANGLE AT CORNER CONDITION.
- B. ROOF CURB SUB-FRAMING AND INSULATION OMITTED FOR CLARITY.
- C. DO NOT USE CAULK, (SSCK-1) IN LIEU OF URETHANE CAULK.
- D. ALL CAULK, MASTIC AND FASTENERS ARE PRE-PACKAGED WITH THE ROOF CURB.
- E. AIR CONDITIONER DRAINS SHOULD BE FABRICATED FROM PLASTIC PIPE OF SUITABLE DIAMETER AND EXTENDED AT LEAST TO THE RAIN GUTTER, AND PREFERABLY WELL PAST THE GUTTER. DRAIN WATER FROM AIR CONDITIONER CONTAINS DISOLVED COPPER FROM THE CONDENSATION COILS THAT CAN CAUSE RUSTING OF GALVALUME SHEET PANELS IN A VERY SHORT TIME.
- F. WHEN FIELD CUTTING PANELS OR TRIM DO NOT USE ABRASIVE SAWS OR OTHER CUTTING METHODS WHICH PRODUCE HOT METAL PARTICLES OR BURN THE CUT EDGES. THESE METHODS WILL DAMAGE THE PAINTED AND GALVALUME FINISH AND VOID ANY WARRANTIES. USE DOUBLE CUT SHEARS, NIBBLERS OR OTHER CUTTING DEVICES WHICH DO NOT PRODUCE HOT METAL PARTICLES OR BURNED EDGES.

AIM-LOK ROOF CURB
INSTALLATION DETAIL

DRAWN BY: _____ CHECKED BY: _____ DWG. DATE: _____

ARCHITECTURAL INTEGRATED METALS, INC.
1748 Northside Industrial Boulevard
Columbus, Georgia 31904

(706) 660-1877



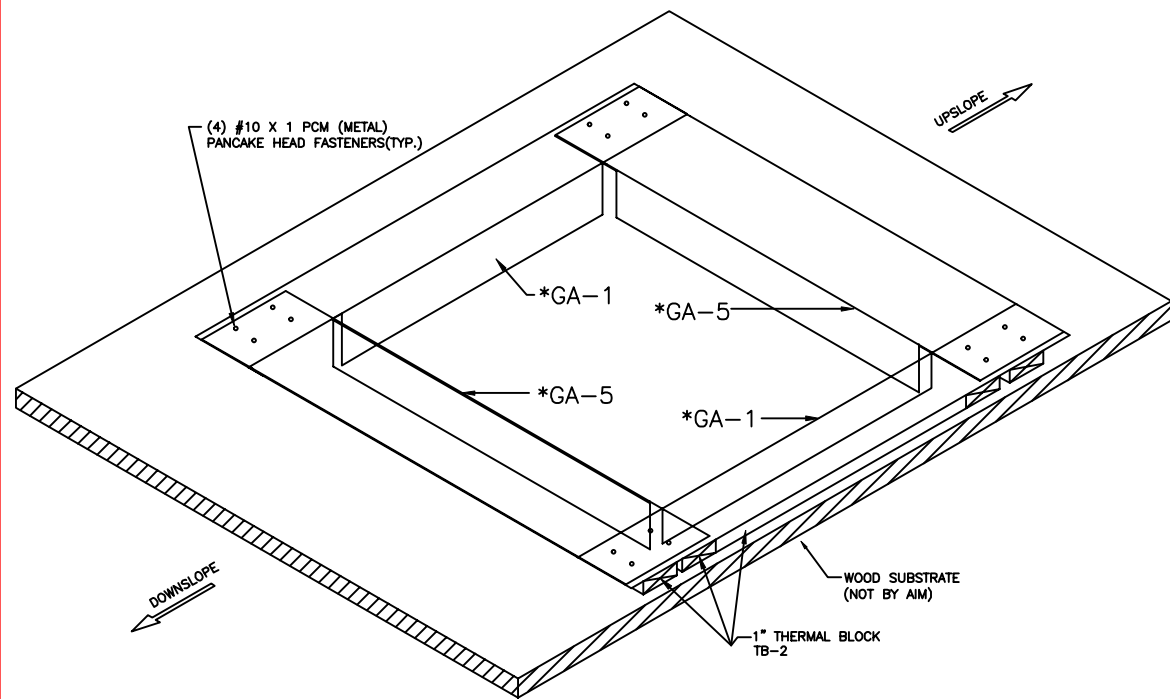
NO SCALE

REV. NO.
0

REV. DATE

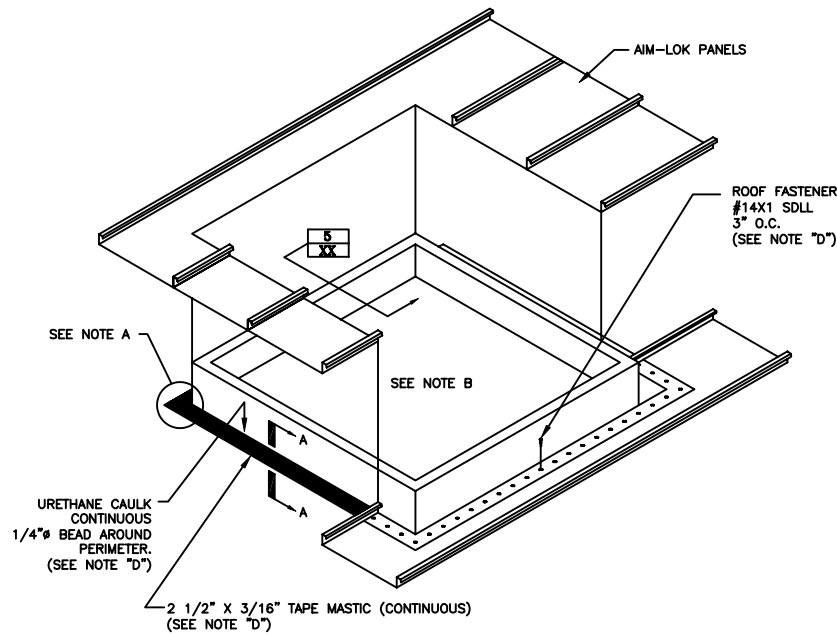
JOB NO.

DWG. NO.

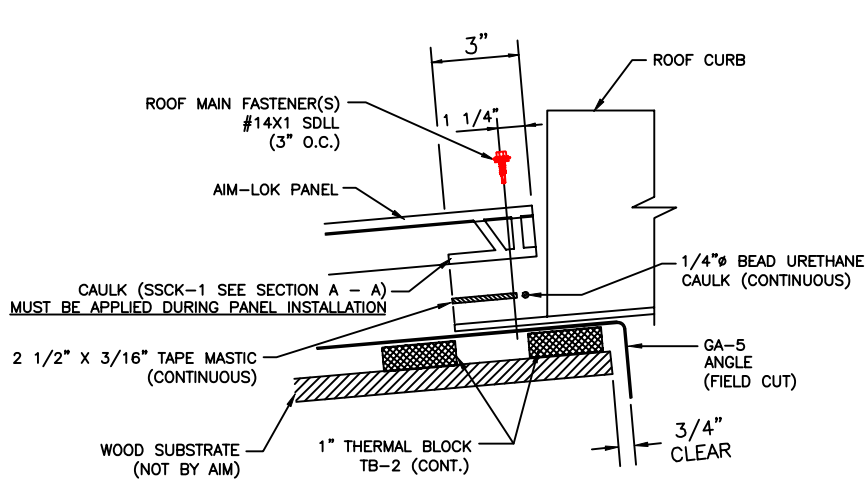
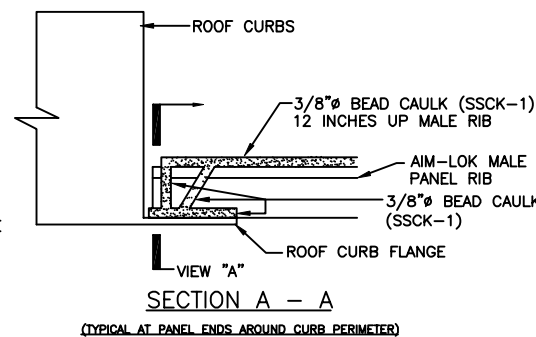
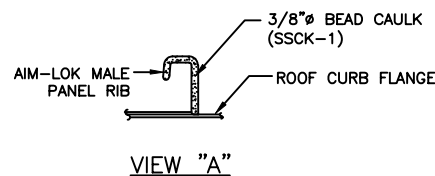


* = FIELD NOTCH ANGLE AS SHOWN

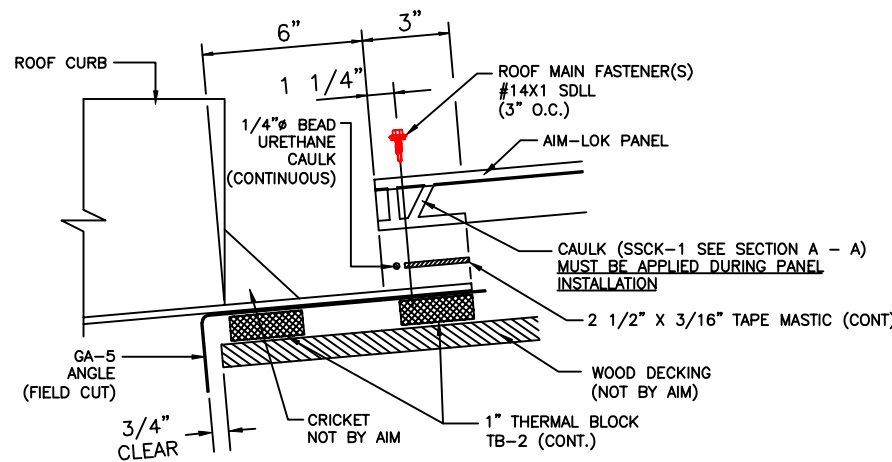
ROOF CURB FRAMING KEY 1
XX



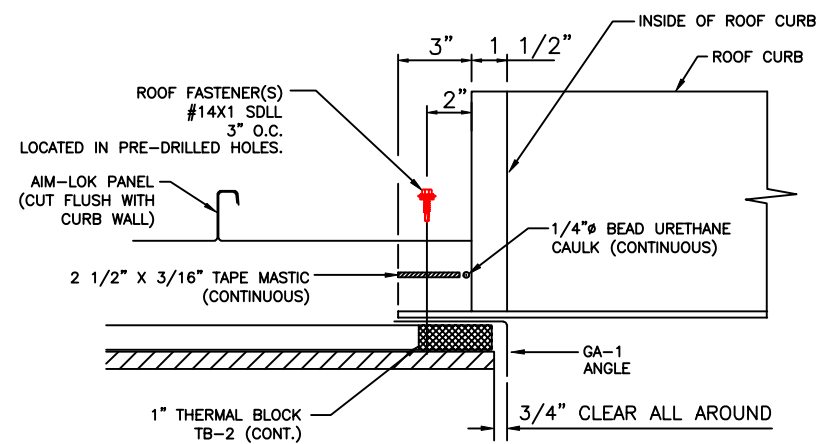
ROOF CURB INSTALLATION DETAIL 2
XX



DETAIL AT DOWNSLOPE CURB FLANGE 3
XX



DETAIL AT UPSLOPE CURB FLANGE 4
XX



ROOF CURB DETAIL AT SIDES 5
XX

INSTALLATION PROCEDURES

1. INSTALL THE CURB SUB-FRAMING AND ROOF CURB PRIOR TO SHEETING THE ROOF.
2. CUT THE ROOF PANELS AT THE CURB FLANGES AS SHOWN.
3. APPLY THE TAPE MASTIC AND URETHANE CAULK TO THE CURB FLANGES AS SHOWN IN THE DETAILS. SEALANT PLACEMENT IS CRITICAL.
4. PLACE PANEL ON THE CURB FLANGE AND ATTACH WITH ROOF FASTENERS. CAULK PANEL ENDS WITH SSCK-1 CAULK BEFORE INSTALLING THE NEXT PANEL. (SEE SECTION A - A)
5. CONTINUE INSTALLING PANELS IN THIS MANNER UNTIL ALL PANELS ARE IN PLACE AND CURB INSTALLATION IS COMPLETE.
6. TOOL ALL EXPOSED CAULKING TO ALLOW FOR PROPER DRAINAGE. REMOVE ALL METAL SHAVINGS FROM CURB AREA.

NOTES:

- A. CUT (DO NOT TEAR) TAPE MASTIC AT A 45° ANGLE AT CORNER CONDITION.
- B. ROOF CURB SUB-FRAMING AND INSULATION OMITTED FOR CLARITY.
- C. DO NOT USE CAULK, (SSCK-1) IN LIEU OF URETHANE CAULK.
- D. ALL CAULK, MASTIC AND FASTENERS ARE PRE-PACKAGED WITH THE ROOF CURB.
- E. AIR CONDITIONER DRAINS SHOULD BE FABRICATED FROM PLASTIC PIPE OF SUITABLE DIAMETER AND EXTENDED AT LEAST TO THE RAIN GUTTER, AND PREFERABLY WELL PAST THE GUTTER. DRAIN WATER FROM AIR CONDITIONER CONTAINS DISSOLVED COPPER FROM THE CONDENSATION COILS THAT CAN CAUSE RUSTING OF GALVALUME SHEET PANELS IN A VERY SHORT TIME.
- F. WHEN FIELD CUTTING PANELS OR TRIM DO NOT USE ABRASIVE SAWS OR OTHER CUTTING METHODS WHICH PRODUCE HOT METAL PARTICLES OR BURN THE CUT EDGES. THESE METHODS WILL DAMAGE THE PAINTED AND GALVALUME FINISH AND VOID ANY WARRANTIES. USE DOUBLE CUT SHEARS, NIBBLERS OR OTHER CUTTING DEVICES WHICH DO NOT PRODUCE HOT METAL PARTICLES OR BURNED EDGES.

AIM-LOK ROOF CURB
INSTALLATION DETAIL
ON WOOD DECKING

DRAWN BY: CHECKED BY: DWG. DATE

ARCHITECTURAL INTEGRATED METALS, INC.
1748 Northside Industrial Boulevard
Columbus, Georgia 31904
(706) 660-1877



NO SCALE

REV. NO.
0

REV. DATE

JOB NO.

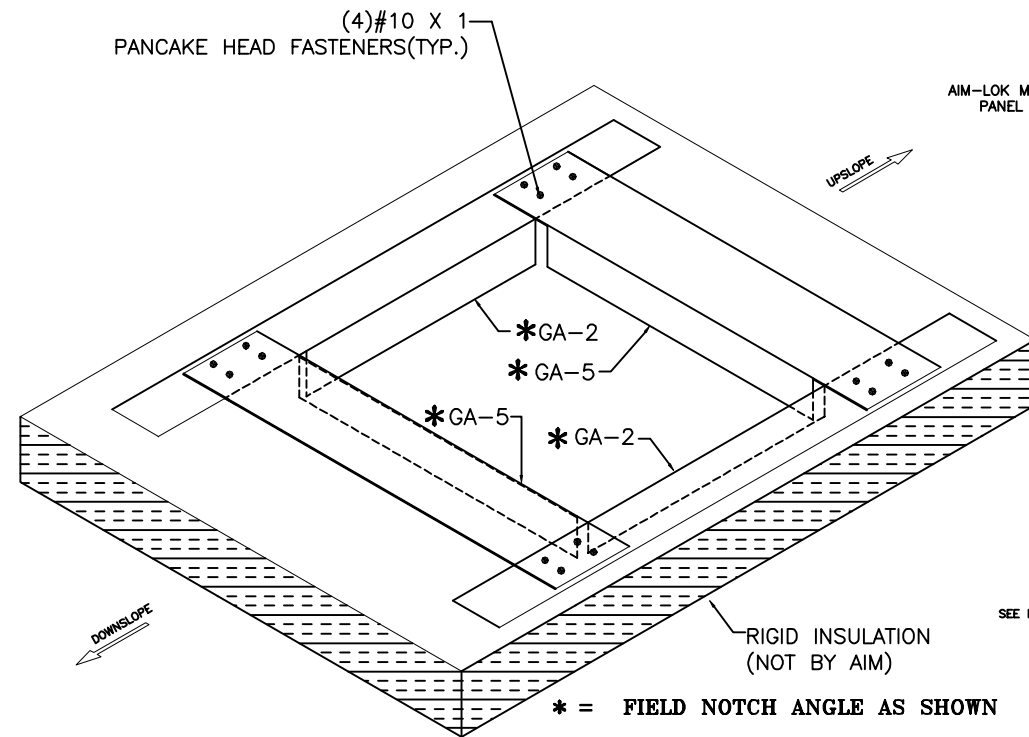
DWG. NO.

INSTALLATION PROCEDURES

1. INSTALL THE CURB SUB-FRAMING AND ROOF CURB PRIOR TO SHEETING THE ROOF.
2. CUT THE ROOF PANELS AT THE CURB FLANGES AS SHOWN.
3. APPLY THE TAPE MASTIC AND URETHANE CAULK TO THE CURB FLANGES AS SHOWN IN THE DETAILS. SEALANT PLACEMENT IS CRITICAL.
4. PLACE PANEL ON THE CURB FLANGE AND ATTACH WITH ROOF FASTENERS. CAULK PANEL ENDS WITH SSCK-1 CAULK BEFORE INSTALLING THE NEXT PANEL. (SEE SECTION A - A)
5. CONTINUE INSTALLING PANELS IN THIS MANNER UNTIL ALL PANELS ARE IN PLACE AND CURB INSTALLATION IS COMPLETE.
6. TOOL ALL EXPOSED CAULKING TO ALLOW FOR PROPER DRAINAGE. REMOVE ALL METAL SHAVINGS FROM CURB AREA.

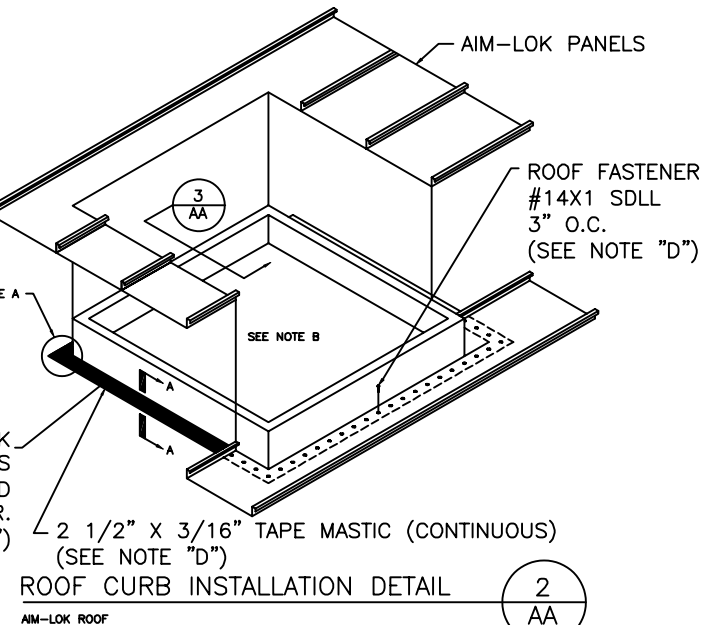
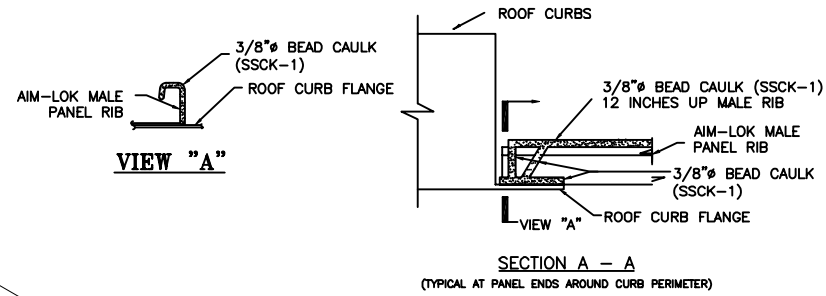
NOTES:

- A. CUT (DO NOT TEAR) TAPE MASTIC AT A 45° ANGLE AT CORNER CONDITION.
- B. ROOF CURB SUB-FRAMING AND INSULATION OMITTED FOR CLARITY.
- C. DO NOT USE CAULK, (SSCK-1) IN LIEU OF URETHANE CAULK.
- D. ALL CAULK, MASTIC AND FASTENERS ARE PRE-PACKAGED WITH THE ROOF CURB.
- E. AIR CONDITIONER DRAINS SHOULD BE FABRICATED FROM PLASTIC PIPE OF SUITABLE DIAMETER AND EXTENDED AT LEAST TO THE RAIN GUTTER, AND PREFERABLY WELL PAST THE GUTTER. DRAIN WATER FROM AIR CONDITIONER CONTAINS DISSOLVED COPPER FROM THE CONDENSATION COILS THAT CAN CAUSE RUSTING OF GALVALUME SHEET PANELS IN A VERY SHORT TIME.
- F. WHEN FIELD CUTTING PANELS OR TRIM DO NOT USE ABRASIVE SAWS OR OTHER CUTTING METHODS WHICH PRODUCE HOT METAL PARTICLES OR BURN THE CUT EDGES. THESE METHODS WILL DAMAGE THE PAINTED AND GALVALUME FINISH AND VOID ANY WARRANTIES. USE DOUBLE CUT SHEARS, NIBBLERS OR OTHER CUTTING DEVICES WHICH DO NOT PRODUCE HOT METAL PARTICLES OR BURNED EDGES.



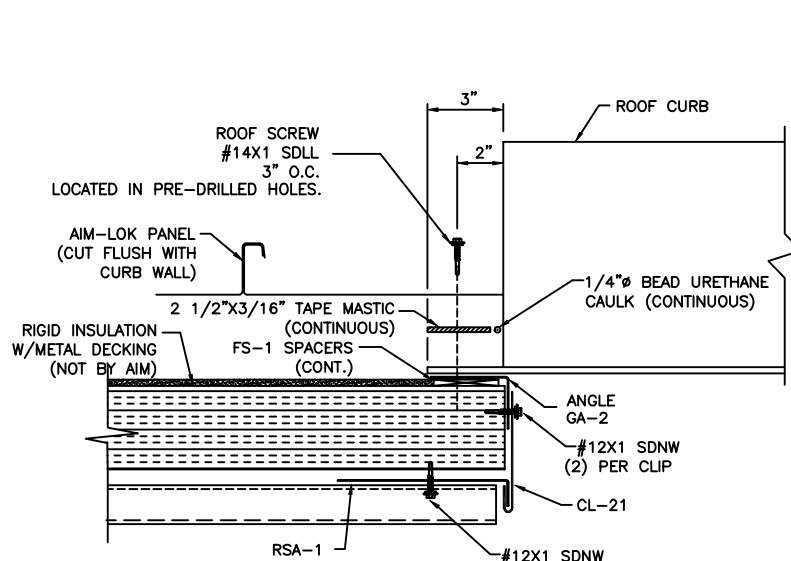
ROOF CURB FRAMING KEY
METAL DECKING NOT SHOWN FOR CLARITY

1
AA



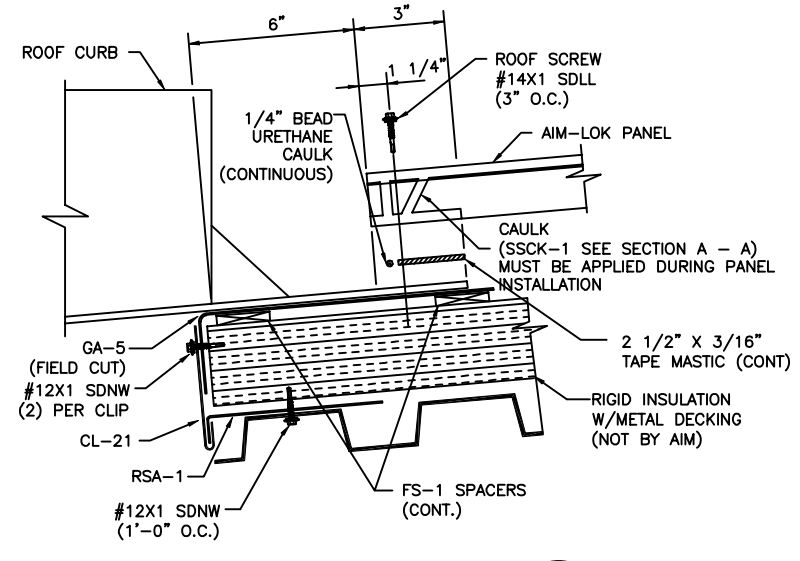
ROOF CURB INSTALLATION DETAIL

2
AA



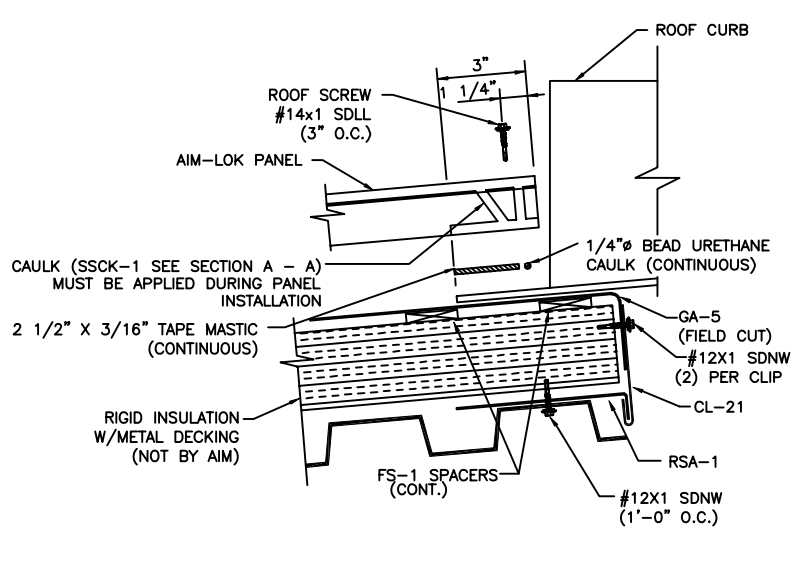
ROOF CURB DETAIL

3
AA



DETAIL AT UPSLOPE CURB FLANGE

4
AA



DETAIL AT DOWNSLOPE CURB FLANGE

5
AA

ROOF CURB
INSTALLATION DETAIL
ON RIGID INSULATION

DRAWN BY: _____
CHECKED BY: _____
DWG. DATE: _____

ARCHITECTURAL INTEGRATED METALS, INC.
1748 Northside Industrial Boulevard
Columbus, Georgia 31904



(706) 660-1877

NO SCALE

REV. NO.
0

REV. DATE

JOB NO.

DWG. NO.