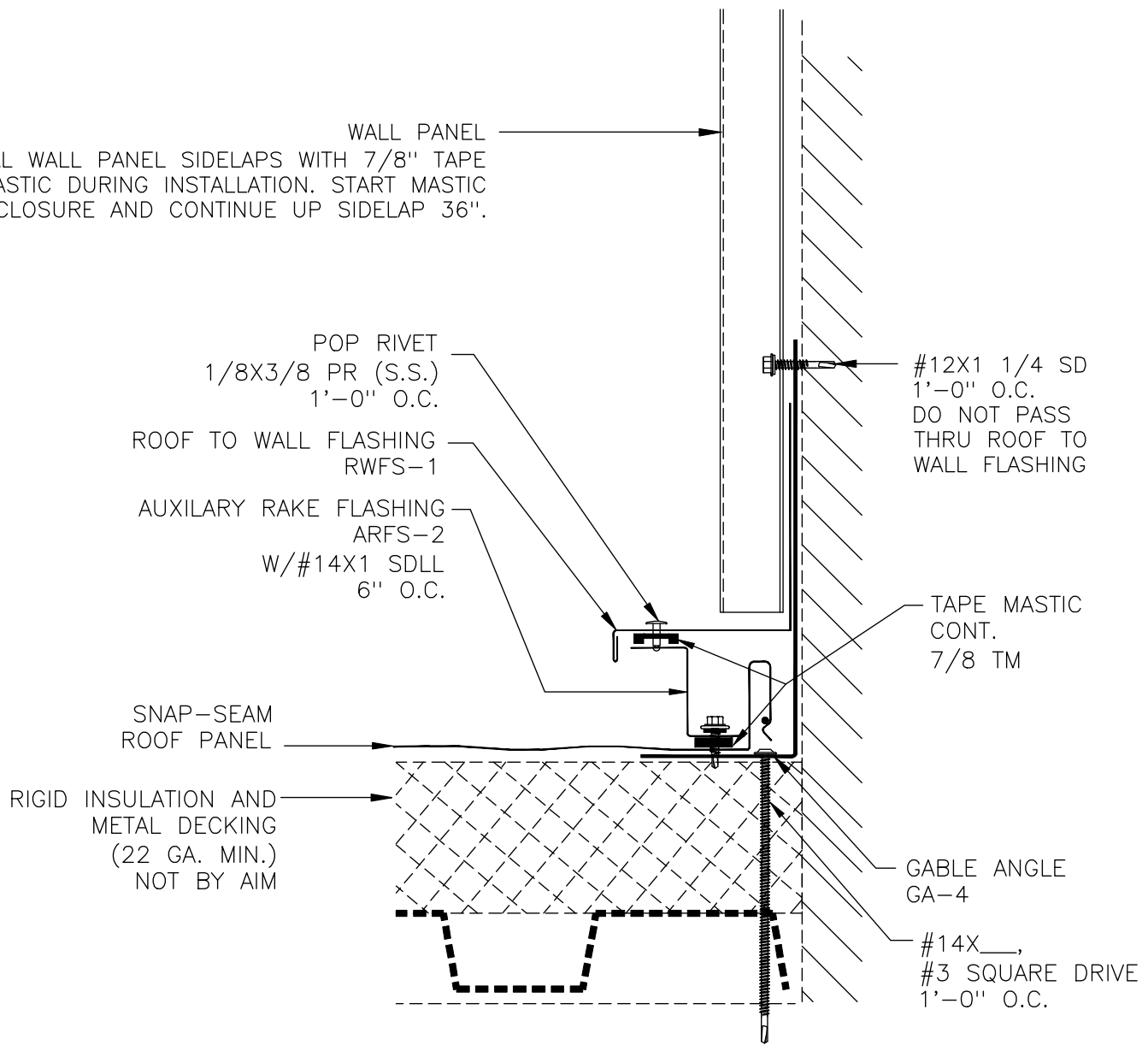
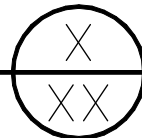


WALL PANEL
SEAL WALL PANEL SIDELAPS WITH 7/8" TAPE MASTIC DURING INSTALLATION. START MASTIC AT CLOSURE AND CONTINUE UP SIDELAP 36".



GABLE ROOF TO WALL ON MDRB (STARTING)
FOR SNAP-SEAM PANEL (PINNED CONDITION)



SCALE: NONE	DATE:
DRAWN BY: KP	02/16/09
CHECKED BY:	
REVISED BY:	

SNAP-SEAM
GABLE ROOF TO WALL
ON RIGID INSULATION &
METAL DECK



DWG NO: SS.3.C.5