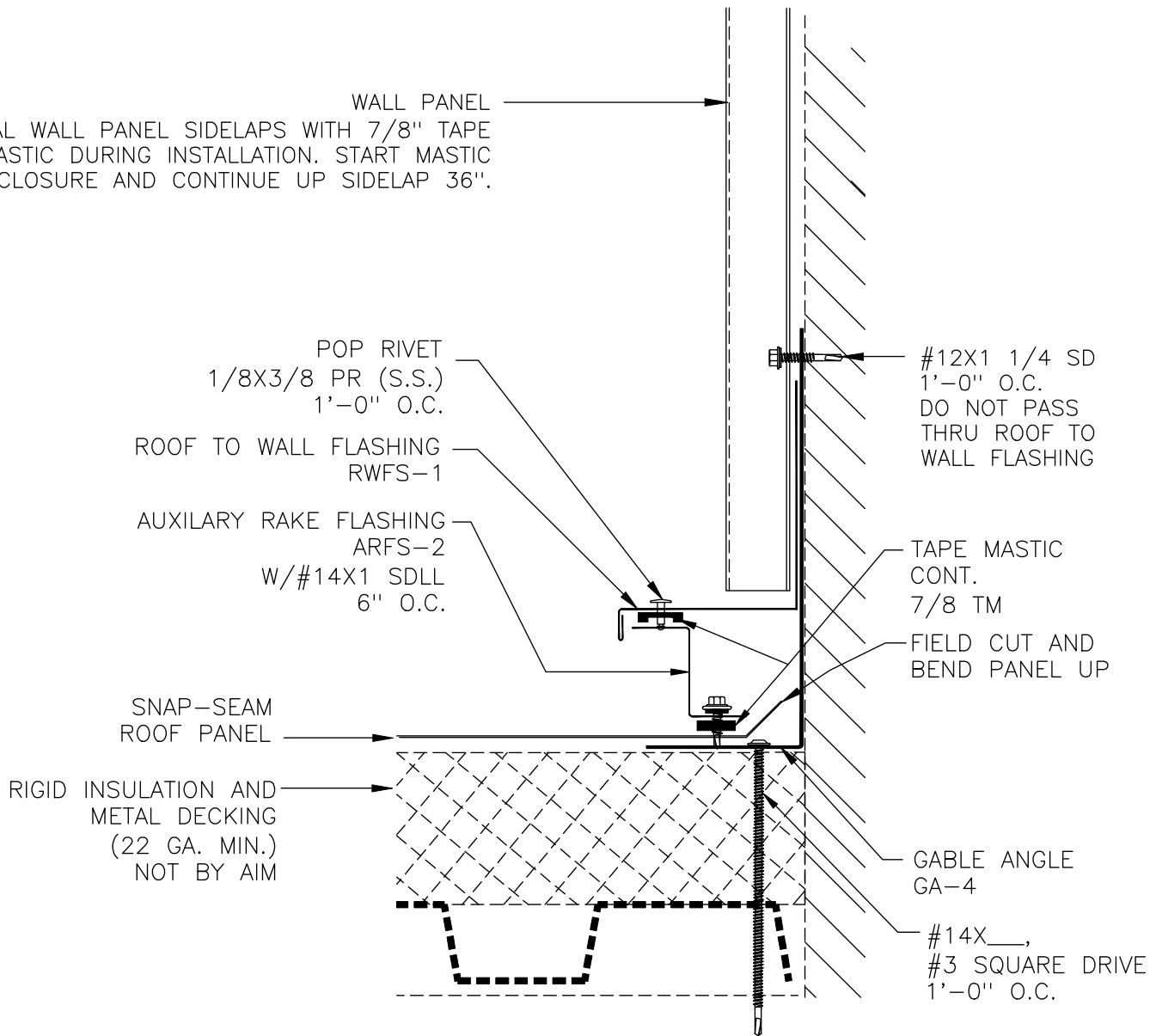
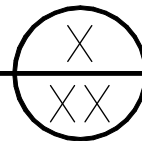


WALL PANEL
SEAL WALL PANEL SIDELAPS WITH 7/8" TAPE MASTIC DURING INSTALLATION. START MASTIC AT CLOSURE AND CONTINUE UP SIDELAP 36".



GABLE ROOF TO WALL ON MDRB (ENDING)
FOR SNAP-SEAM PANEL (PINNED CONDITION)



SCALE: NONE

DATE:

DRAWN BY: KP

02/16/09

CHECKED BY:

REVISED BY:

SNAP-SEAM
GABLE ROOF TO WALL
ON RIGID INSULATION &
METAL DECK



DWG NO:

SS.3.C.6